

FILED
GREENVILLE CO., S.C.
MAR 13 1 51 PM '86
DONNIE S. TANKERSLEY
R.M.C.

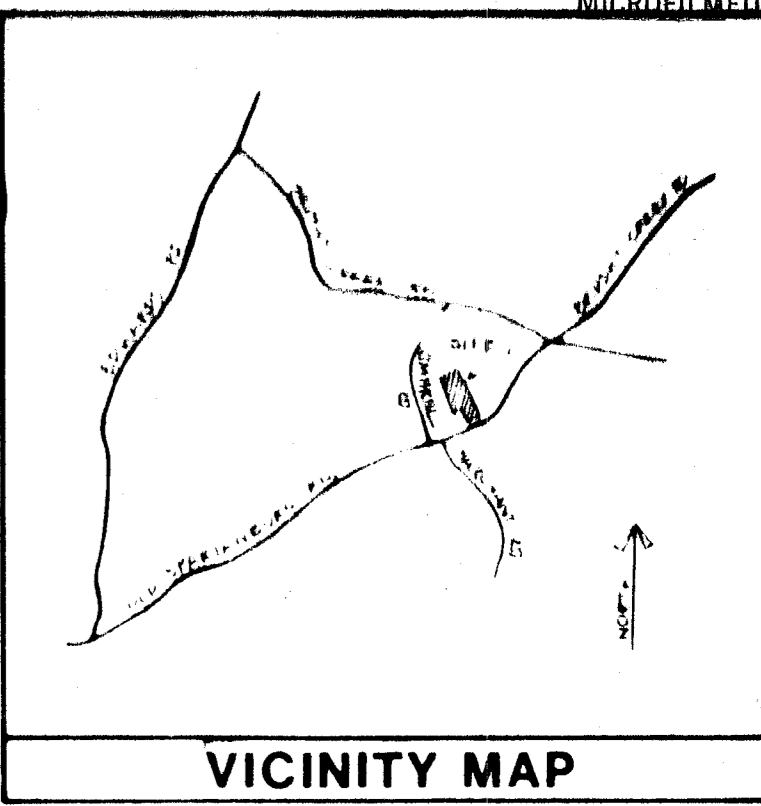
Mr. Arden Traynham of this office has performed periodic observations of the sanitary sewer installation at the above referenced project, and to the best of our knowledge and belief, the lines are complete and are in accordance with Taylors Fire and Sewer District's specifications as referred to on these record drawings submitted by the Engineer of Record.

Willie T. Sinclair, P.E.
THE PIEDMONT GROUP

FILED
GREENVILLE CO., S.C.
MAR 13 1 51 PM '86
DONNIE S. TANKERSLEY
R.M.C.

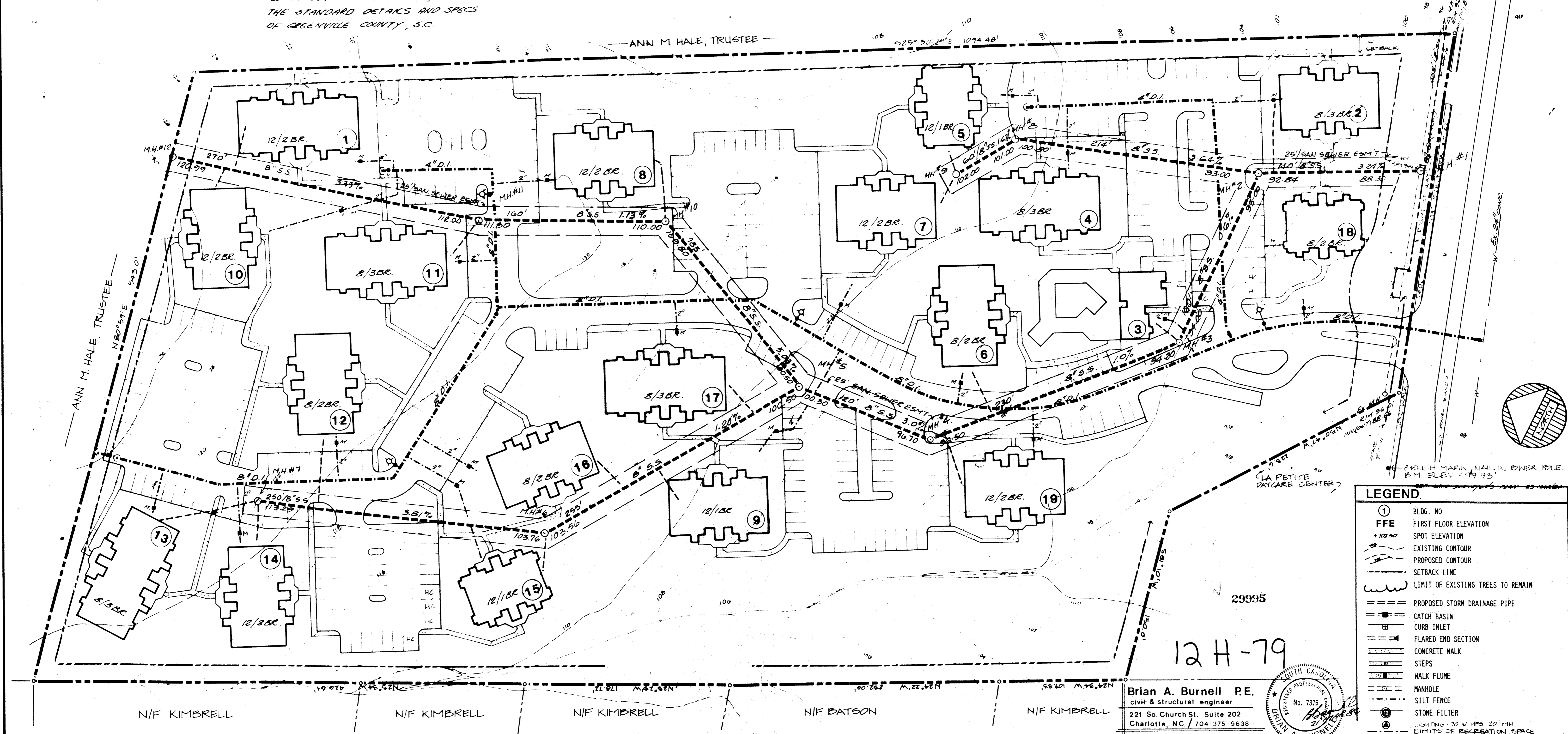
BUILDING DATA

BLDG. NO.	NO. OF UNITS	NO. OF UNITS	NO. OF UNITS	NO. OF UNITS
TWO	2	2 UNITS	2 UNITS	
THREE	2	2 UNITS		
FOUR	2	2 UNITS	2 UNITS	
FIVE	2	2 UNITS		2 UNITS
SIX	2	2 UNITS		
SEVEN	2	2 UNITS		
EIGHT	2	2 UNITS		
NINE	2	2 UNITS		
TEN	2	2 UNITS		
ELEVEN	2	2 UNITS	2 UNITS	
TWELVE	2	2 UNITS		
THIRTEEN	2	2 UNITS	2 UNITS	
FOURTEEN	2	2 UNITS		
FIFTEEN	2	2 UNITS		2 UNITS
SIXTEEN	2	2 UNITS	2 UNITS	
SEVENTEEN	2	2 UNITS	2 UNITS	
EIGHTEEN	2	2 UNITS		2 UNITS
NINETEEN	2	2 UNITS	2 UNITS	
TOTALS	36 UNITS	104 UNITS	40 UNITS	9 UNITS



NOTES: WATER DISTRIBUTION
ALL WORK TO BE DONE
ACCORDANCE WITH GREENVILLE
WATER SYSTEM'S DESIGN AND
SPECS & SPECIFICATIONS.

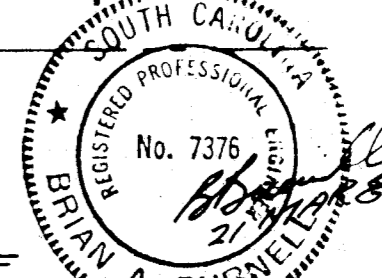
NOTES - SANITARY SEWER
1 REFER TO PROFILES ON SHEET 5
2 TOTAL NUMBER OF DWELLINGS = 180
(36 1BR, 104 2BR, 40 3BR, 544 more)
3 AVERAGE DAILY SEWAGE FLOW 54,400 G
4 CONSTRUCTION SHALL COMPLY WITH
THE STANDARD DETAILS AND SPECS
OF GREENVILLE COUNTY, S.C.



LEGEND

- ① BLDG. NO
- FFE FIRST FLOOR ELEVATION
- +702.50 SPOT ELEVATION
- EXISTING CONTOUR
- - - PROPOSED CONTOUR
- SETBACK LINE
- LIMIT OF EXISTING TREES TO REMAIN
- PROPOSED STORM DRAINAGE PIPE
- CATCH BASIN
- CURB INLET
- FLARED END SECTION
- CONCRETE WALK
- STEPS
- WALK FLUME
- MANHOLE
- SILT FENCE
- STONE FILTER
- LIGHTING - 70 W HPS 20' MH
- LIMITS OF RECREATION SPACE

Brian A. Burnell P.E.
civil & structural engineer
221 So. Church St. Suite 202
Charlotte, NC / 704-375-9638



Project Manager	Revisions
Drawn By	1. EX S.S. INFO ADDED 28 MAR 84
Checked By	2. USE 6" S.S. LATERALS PER H.U.D. REVIEW. 22 JUN 84
Date	3. WATER MAINS ADDED PER GREENVILLE WATER SYSTEM'S APPROVED PLAN - 7/17/84
Project Number	

4. EXTENSION OF SAN. SEWER & 8" D.I. WATER TO NORTH PROPERTY LINE W/ CHANGE TO PUBLIC 5.9 LING 15 OCT 1984	5 TAYLOR'S FIRE & SWR. DISTR. REV. COMMENT 12 FEB 85
--	--

12 H - 78 29995



DPR ASSOCIATES
Landscape Architects
Design • Planning • Research
2036 East Seventh Street
Charlotte, NC 28204
704/332-1204

SANITARY SEWER & WATER
WESTBURY PLACE
GREENVILLE, S.C. JOHN CROSLAND COMPANY

Scale: 1 IN. = 40 FT.
Sheet Number: L4 REV. 5
Of Total